

Breakthrough Products for Industrial Bolting

Flash™

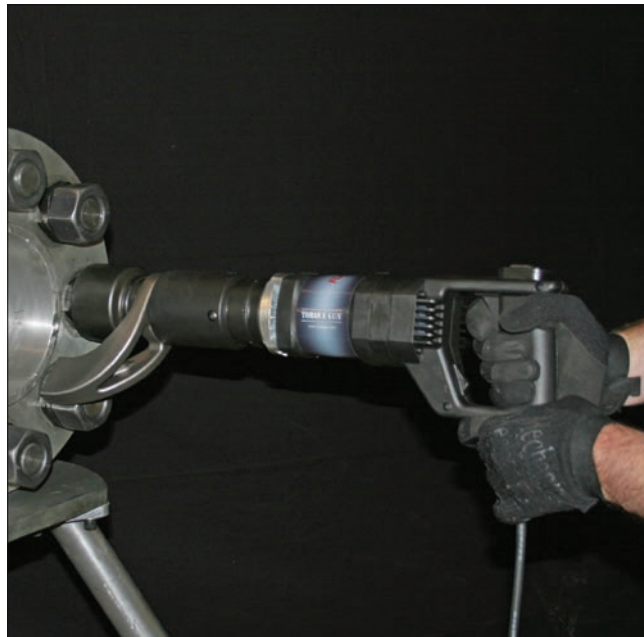
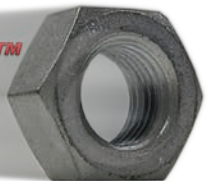
Electric Torque Multiplier

Compliant with the new Noise & Vibration Directive.
Meets all OSHA Requirements for safe tool use.



- Torque Output up to 3,000 ft. lbs.
- Ultra Durable Aerospace Metals
- Proven Gearbox Technology
- Unmatched Convenience & Portability
- Rugged Design and Build Quality
- Available in 110V and 220V

FLASH™
ELECTRIC



24 Hour SERVICE

888-GUN-2-GUN

www.torquegun.com

— THE —
TORQUE GUN™
— COMPANY —

120 WESLEY ST., SO. HACKENSACK NJ 07606

ACCESSORIES



FIELD CHECK

Calibration of your tools just got more convenient! Verify the torque output of your tools, on the job site, instantly with the NEW FIELD CHECK!



TORQUE IMPACT SOCKETS

Impact and torque assert different stress loads to sockets. The TorCimact™ sockets from the TORQUE GUN Company come in all sizes and configurations. The difference is Quality and instant availability.



OFFSET LINKS



For limited clearance. jGun accessories are designed with the highest quality standards.

DIMENSIONAL DATA



MODEL	FLASH-.5	FLASH-1	FLASH-3
INPUT VOLTAGE	110VAC/60 Hz @ 10 AMPS 220VAC/ 50Hz @ 7 AMPS	110VAC/60 Hz @ 10 AMPS 220VAC/ 50Hz @ 7 AMPS	110VAC/60 Hz @ 10 AMPS 220VAC/ 50Hz @ 7 AMPS
OUTPUT TORQUE RANGE	185 - 475 FT/ LBS 251 - 644 NM	510 - 1205 FT/ LBS 691 - 1634 NM	800 - 3120FT/ LBS 1084 - 4230 NM
MAX. AMP DRAW	16 AMPS	16 AMPS	16 AMPS
TOOL WEIGHT	10.1 LBS	11.7 LBS	18.6 LBS
HEIGHT (H)	5-1/2"	5-1/2"	5-1/2"
LENGTH (L)	17 3/8"	17 1/2"	19-3/8"
WIDTH (W)	3-5/8"	3-5/8"	3-5/8"
OUTPUT SQUARE DRIVE	3/4"	3/4"	1"
RPM	20 RPM	6.5 RPM	2.0 RPM